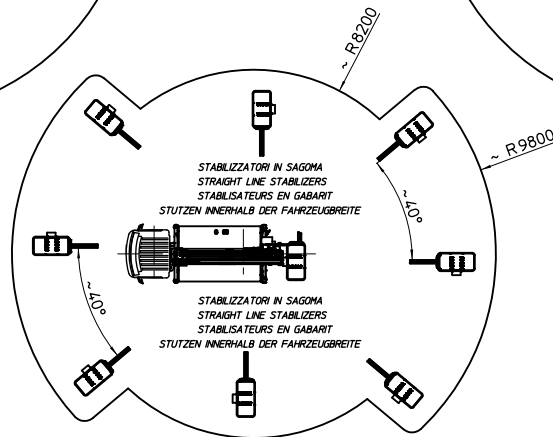
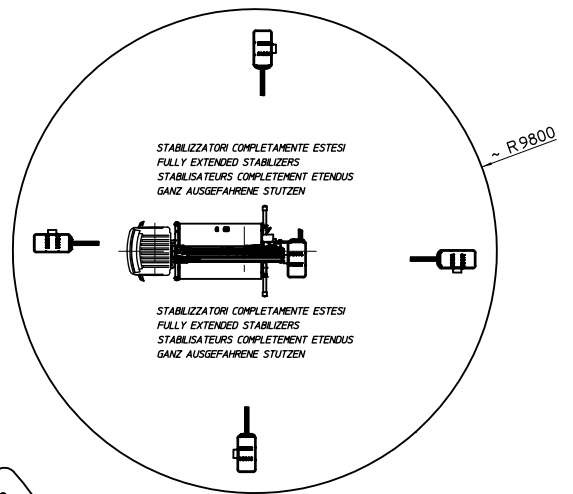
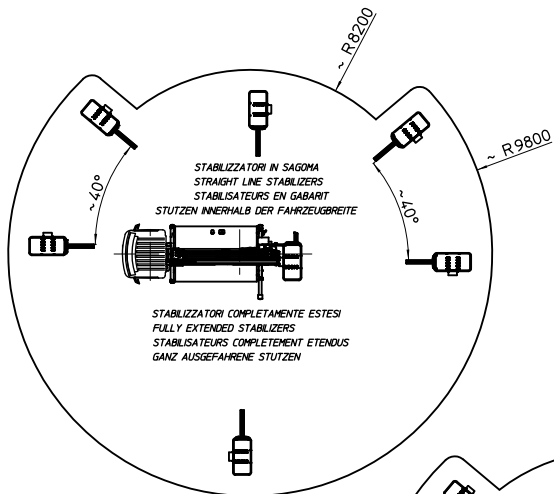


MULTITEL MX240

Ente	Rev.	Descrizione	Data	Dis.	Contr.	Ap.A0
MRK	0	EMISSIONE	20/03/12	P.F.		
INGOMBRO - SCHEDA 54/1 - Rev. 0 - 15/12/00						

D47906



Q=200 kg

MULTITEL

MX 210

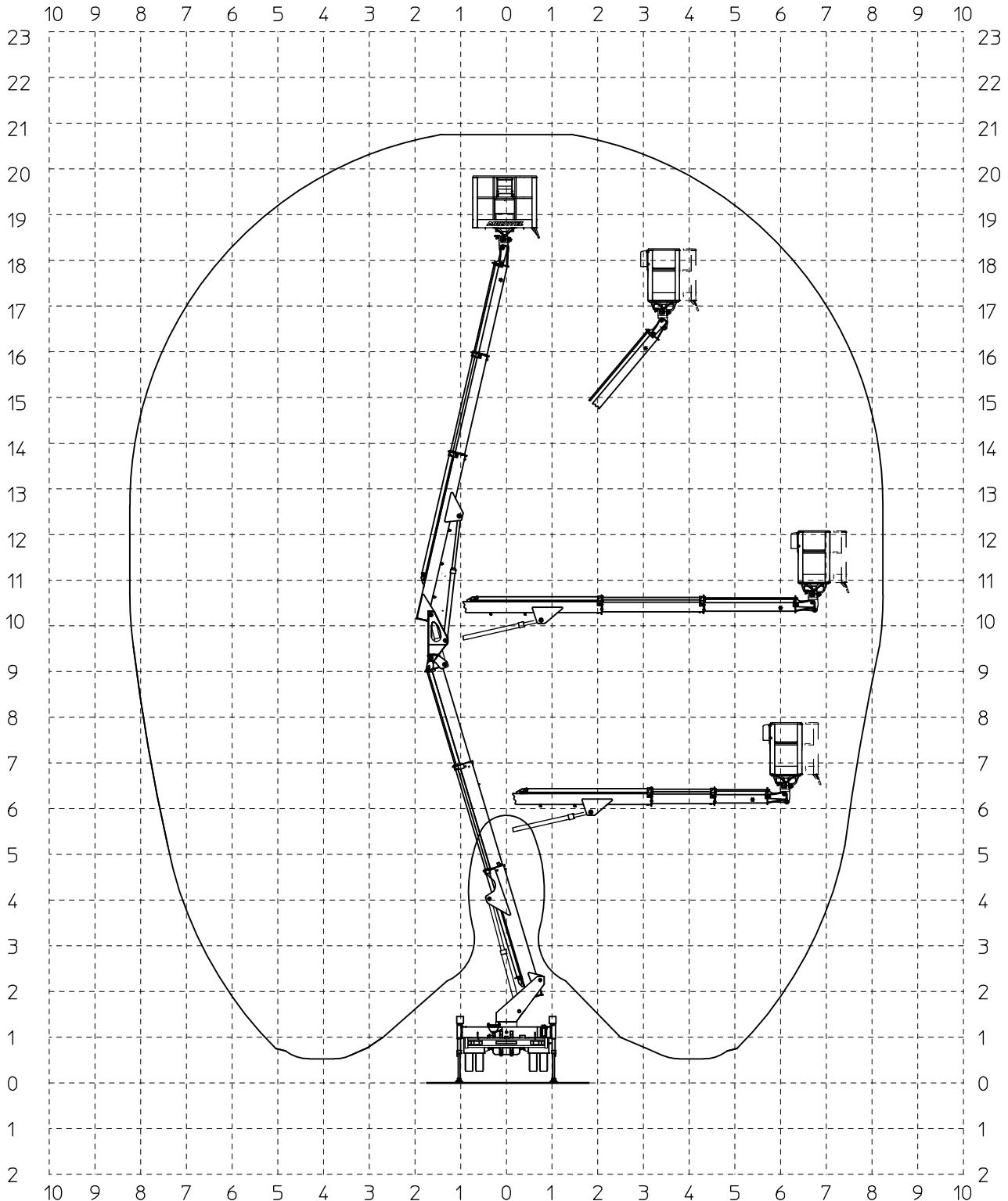
Ente	Rev.	Descrizione	Data	Dis.	Contr.	Ap.A0
MRK	0	EMISSIONE	20/03/12	P.F.		
DIAGRAMMA - SCHEDA 54/2 - Rev. 0 - 15/12/00						

D47905

200kg

STABILIZZATORI IN SAGOMA
STRAIGHT LINE STABILIZERS
STABILISATEURS EN GABARIT
STÜTZEN INNERHALB DER FAHRZEUGBREITE

SBRACCIO DI LAVORO 8.2 m ±5%
WORKING OUTREACH 8.2 m ±5%
DEPORT DE TRAVAIL 8.2 m ±5%
SEITLICHE REICHWEITE 8.2 m ±5%



MULTITEL

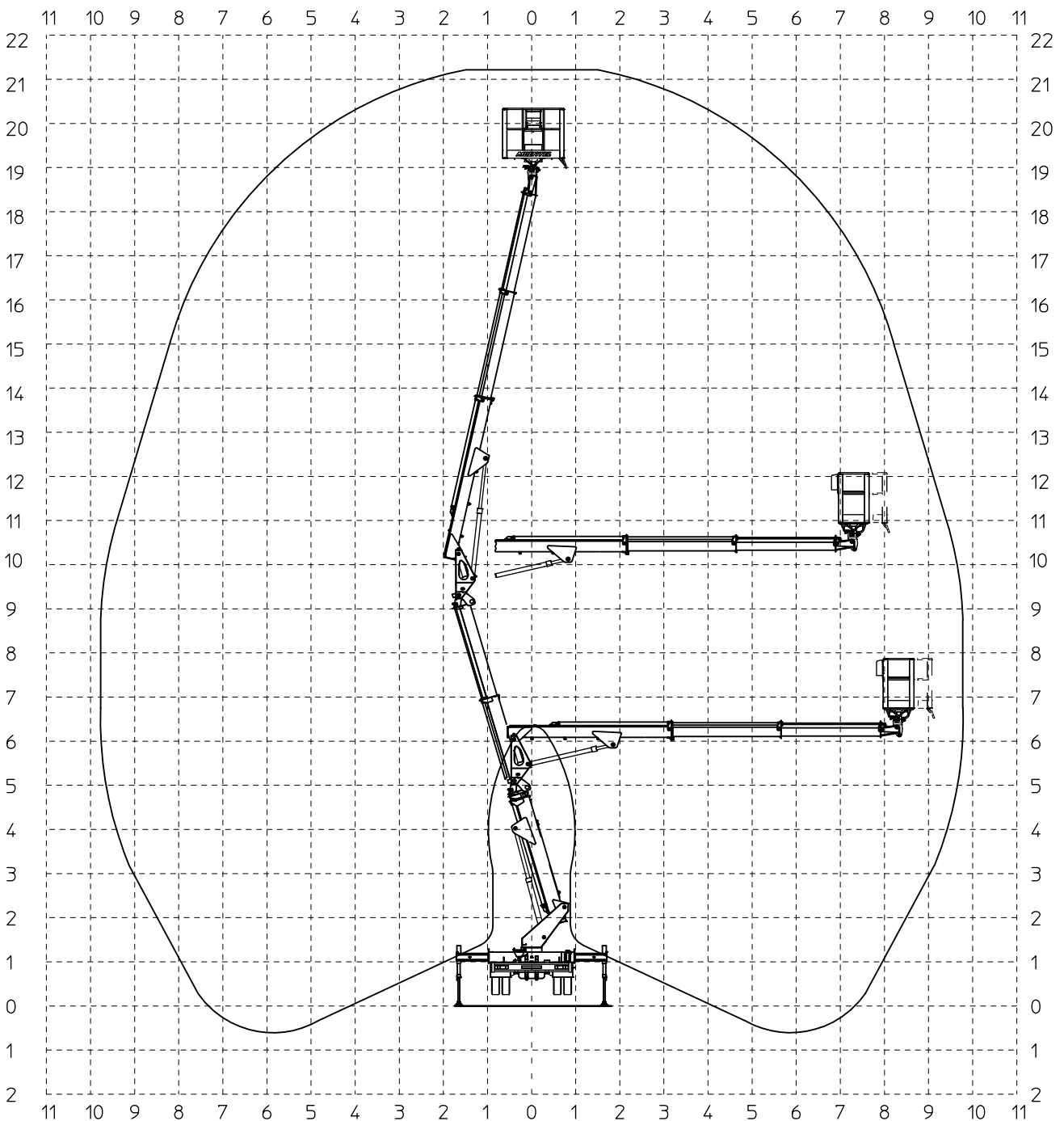
MX 210

Ente	Rev.	Descrizione	Data	Dis.	Contr.	Ap.A0
MRK	0	EMISSIONE	20-03-12	P.F.		
DIAGRAMMA - SCHEDA 54/2 - Rev. 0 - 15/12/00						

D47903

200kg

SBRACCIO DI LAVORO	9.8 m	±5%
WORKING OUTREACH	9.8 m	±5%
DEPORT DE TRAVAIL	9.8 m	±5%
SEITLICHE REICHWEITE	9.8 m	±5%

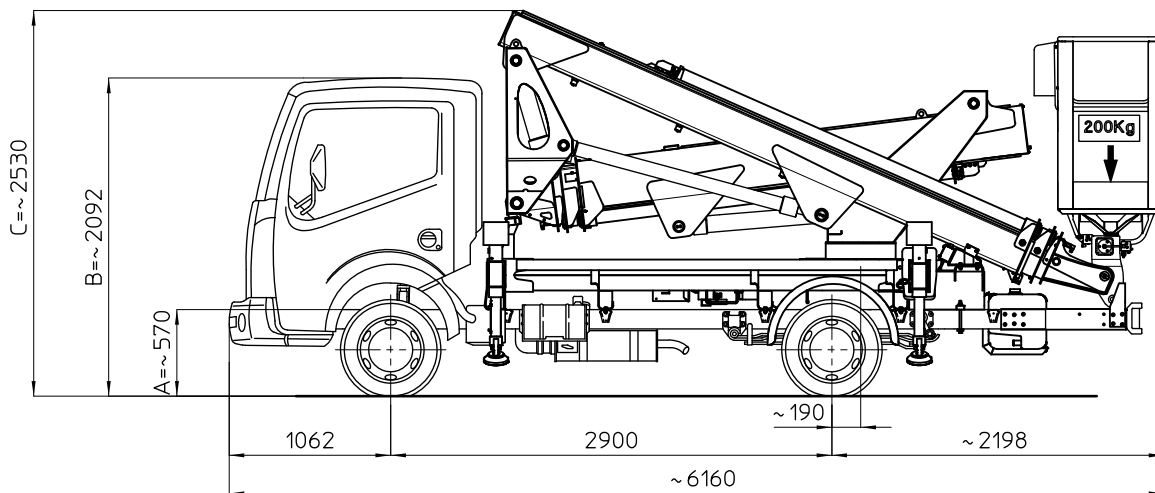


MULTITEL MX 240

NISSAN CABSTAR 35.12 EURO5

Ente	Rev.	Descrizione	Data	Dis.	Contr.	Ap.A0
MRK	0	EMISSIONE	19/03/12	PF.		
INGOMBRO - SCHEDA 54/1 - Rev. 0 - 15/12/00						

D47902



I - Le quote riportate in disegno sono indicative e possono subire variazioni. In particolare le quote A-B sono relative alle dimensioni dell'autocarro, quindi devono essere verificate sullo stesso. La quota C (altezza totale) e' subordinata alle quote A-B e non comprende eventuali parti flessibili.

F - Les cotes indiquée dans le dessin sont indicatives et peuvent subir des variations. En outre les cotes A-B sont relatives aux dimensions du porteur, donc elles doivent être vérifiées sur le porteur même. La cote C (hauteur totale) est subordonnée aux cotes A-B est indiquée hors flexibles.

E - The dimensions shown in the drawing are an indication and may undergo changes. Further the dimensions A-B are related to the truck sizes, therefore they must be verified. The dimension C (total height) is subject to A-B and does not include hoses.

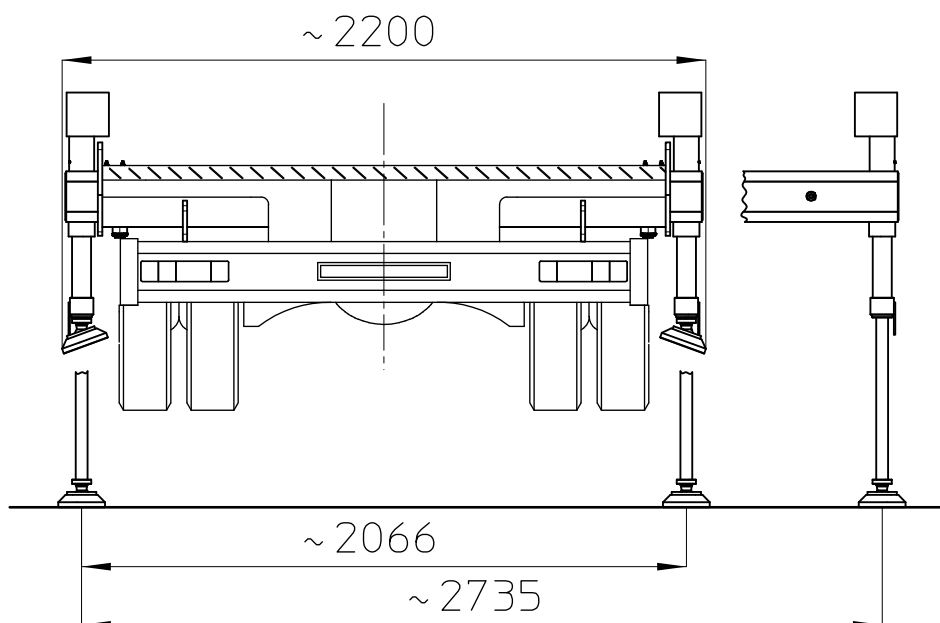
D - Die Maße, die in der Zeichnung gezeigt werden, sind eine Anzeige und können Änderungen durchmachen. Die Abmessungen A-B betreffen die Fahrzeugmasse, daher sollen sie geprüft werden.

Die Abmessung C (Gesamthöhe) hängt von A-B Abmessungen ab, die schlauche sind ausgeschlossen.

DIAGRAMMI DI LAVORO	TIPO DI STABILIZZAZIONE	PORTATA CESTELLO (kg)	
	PIEDI IN SAGOMA	200 kg	
	PIEDI PARZIALI		
	PIEDI ESTESI	D47903	
SOTTOPONTE			
CARICO UTILE DIS.	D47904		
AUTOCARRO	1°ASSE	2°ASSE	
TARE A VUOTO	1170 kg	510 kg	
MASSIMI AMMESSI	1750 kg	2200 kg	
P.T.T.	3500 kg		
NOTE:			

MULTITEL MX 210

NISSAN CABSTAR 35.12 EURO5



D47904

Ente	Rev.	Descrizione	Data	Dis.	Contr.	Ap.AQ
MRK	0	EMISSIONE	20-03-12	P.F.		
INGOMBRO - SCHEDA 54/1 - Rev. 0 - 15/12/00						